





[www.toletbolton.co.uk](http://www.toletbolton.co.uk)

170 Chorley New Road  
Horwich  
Bolton  
Greater Manchester  
BL6 5QW

**Property Ref: 170-CNR-HORW**

**Description:**

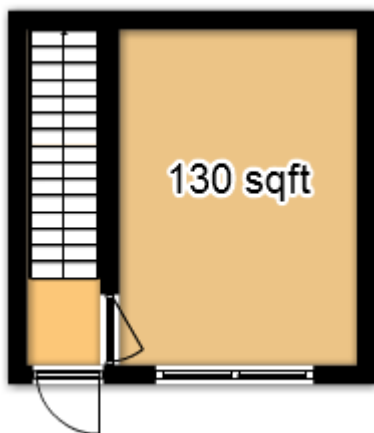
Set on the very popular and highly visible main road of Chorley New Road in the heart of Horwich town centre, this unit is an affordable and ideal space for a small start-up business / nail bar / pop up shop to begin trading immediately.

Set next to a parking lay by, with a bus stop outside and with access to 3 public car parks within a brief walk, this is an ideal space.

**Key facts**

<b>Measurements:</b>	130 sqft approx
<b>Usage:</b>	Shop and Premises
<b>Service Charge:</b>	None Payable
<b>Buildings Insurance</b>	To be confirmed
<b>Monthly Rent:</b>	£333.34 per calendar month
<b>Deposit</b>	£333.34
<b>Available:</b>	Immediately
<b>Business Rates:</b>	To be assessed

**Layout:**



# TO LET BOLTON

[www.toletbolton.co.uk](http://www.toletbolton.co.uk)

**Location:**

